



R2060



2-row trailed potato bunker harvester



Dewulf R2060: productivity has a new name

With the R2060 harvester, Dewulf has transferred the proven technology of its successful R3060 self-propelled 2-row harvester to a trailed version. The R2060 is a high-performance offset harvester which promotes working speed and ease of use in all its aspects. Through its modular design, the R2060 harvester is perfectly adaptable to your specific working conditions.

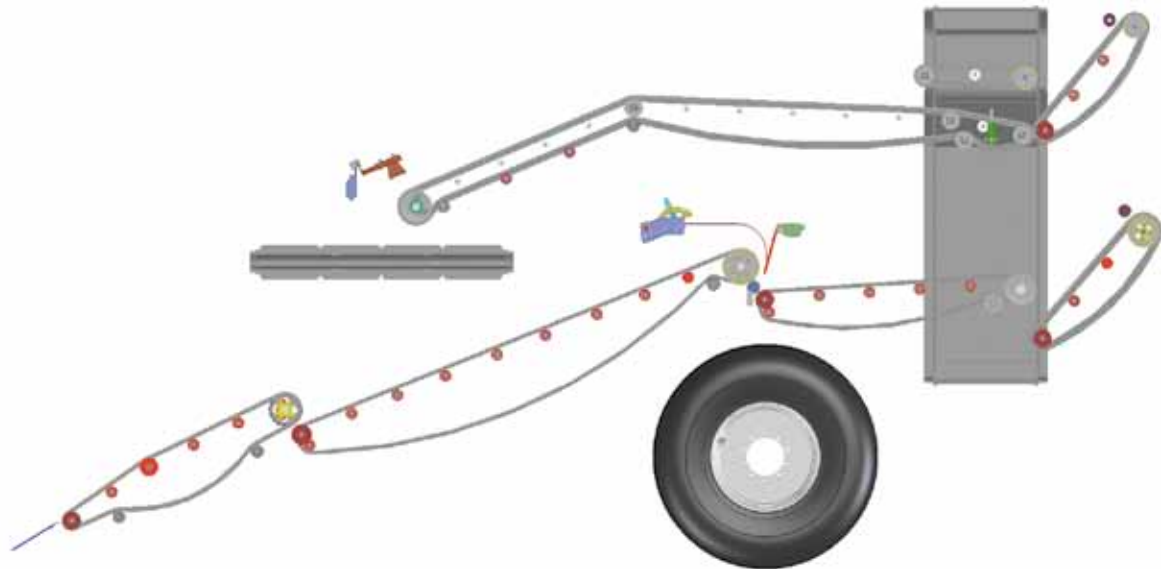


Your productivity, your certainty:

- ✓ 7 tonne bunker for higher return
- ✓ Adaptable to all conditions thanks to modular design
- ✓ Discharge on the move for higher productivity
- ✓ Large cleaning capacity
- ✓ Guaranteed potato quality
- ✓ Large wheels guarantee driveability in all conditions
- ✓ User-friendly operation
- ✓ Accessible maintenance
- ✓ Maintenance-free components (PTO, closed gear boxes)
- ✓ Adaptable for harvesting of various crops (potatoes, onions, carrots ...)



Guaranteed potato quality, thanks to the right harvesting technology

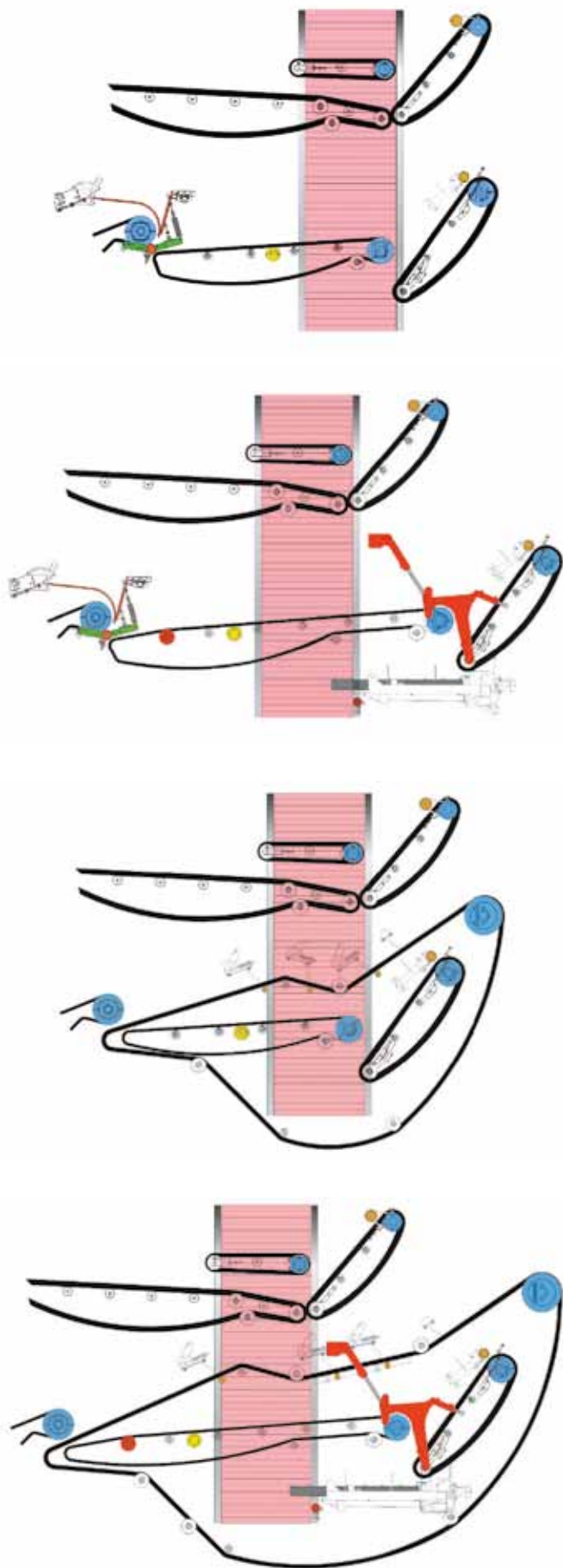


Equipped with a digger web, followed by two sieving webs, the Dewulf R2060 provides small drops and excellent sieving capacity. The R2060 adopts the technique of offset harvesting, which makes sure that the ridges are not compressed and the soil can be sieved much better. The first sieving web is standard equipped with two agitators, with an optional third agitator. The agitators have adjustable speed and can be switched on or off independently. Extra agitators in the first, second and third sieving webs are optional. The harvester also features two hedgehog belts which have adjustable speed and inclination. When intensive cleaning is required, you can also choose the optional cleaning module.

A haulm roller – positioned after the second sieving web – or a deviner web ensures effective separation and disposal of haulm inside the harvester. The wide, open ring elevator fills homogeneously across the entire breadth, rotates slower and hence maintains its sieving capacity. This way, quality losses are reduced to a minimum.

The fixed picking table offers ample space for six people to sort the product before it reaches the seven tonne hopper. A sensor at the end of the sorting table ensures a constant minimum drop height, by continuously altering the height upwards or downwards according to the volume of the potatoes in the hopper.





Four models

Rs2060

- Haulm roller
- 2 hedgehog belts

Each field has its specific characteristics. Thanks to its modular design, the Dewulf R2060 can be adapted to meet your specific working conditions. With a wide scale of options, Dewulf offers a tailored harvester solution.

RA2060

- Haulm roller
- Exchangeable cleaning module
- 2 hedgehog belts

Rq2060

- Deviner web
- 2 hedgehog belts

RQA2060

- Deviner web
- Exchangeable cleaning module
- 2 hedgehog belts



Harvesting and discharging on the move: a real time saver

Stopping in order to discharge the hopper will cost precious time. Due to uncontrollable weather conditions, time is not a luxury you can afford. That is why Dewulf offers unloading on the move as a standard. This enhances constant **productivity**, in some cases even **up to 25%**.

The large **seven tonne hopper** is fixed to the chassis for optimal stability. A moving part with gooseneck reaches into the trailer in order to keep the drop height as small as possible. From the tractor, you can enjoy an excellent view on the unloading process. Filling the hopper does not need further monitoring, as this is a completely automatic process and standard equipment.

The thoughtful hopper design makes the R2060 very versatile. Combined with a **user-friendly operation** from the tractor, this results in unequalled effectiveness.



The gooseneck reaches into the trailer

7 tonne hopper

Master of the field. Anytime, anywhere.

Hedgehog belts

The R2060 is standard equipped with two hedgehog belts for excellent cleaning capacity. Thanks to the large surface of the hedgehog belts, and the ability of adjusting the speed and inclination, R2060 users can maximally respond to ever changing working conditions.

Furthermore, Dewulf's two-row harvester is very flexible thanks to its adjustable agitators and driving mechanism of the sieving webs.

The unique construction of the hedgehog belts, combined with the axial rollers, guarantees unsurpassed cleaning capacity. Soil and clods are being removed from the product stream immediately and left behind on the field.

- ✓ Various diameter sizes and axial rollers available
- ✓ Anti-blockage system for solid protection against foreign objects
- ✓ Reversing of axial rollers
- ✓ Easy access thanks to hydraulically removable unit
- ✓ Time-saving exchange between axial rollers and regular conveyor web



Axial rollers

Especially in extremely wet conditions, harvested potatoes will stick together in big clumps of soil. The R2060 will first transport the potato stream over the wide bottom hedgehog belt. Next, the big clods will fall apart before they reach the axial rollers.

The potato stream is perfectly distributed across the entire width of the axial rollers. Thanks to this excellent spread, the potato flow takes full advantage of the cleaning capacity of the axial rollers. The various lengths of the axial rollers ensure that the pockets of the ring elevator are evenly filled over the full width and that the potato quality is guaranteed.

The axial rollers have adjustable speed. The parallelogram construction allows the operator to change the angle of the axial rollers, without changing the angle of the lower hedgehog belt. The parallel hinge mechanism between the third web, hedgehog belt and axial rollers ensures constant drop heights, irrespective of the axial rollers' position.



Axial rollers



Easy-Clean

Easy-clean

Easy-clean is an ideal module for working on fields with moderate soil conditions, or in cloddy and stony conditions. Thanks to the combination with a double hedgehog belt, this module with transverse roller pairs is very efficient in a wide application area, from extremely dry to very wet. The simple construction allows for an easy exchange.

Innovation that works

APC (Automatic Pressure Control)

Standard

Depending on the weather, the carrying capability of the ridges is likely to change. APC enables the operator to program and adjust the pressure on the ridges, enhancing crop intake. Blend in with the current conditions in the field in the most optimal way.

DAS (Dewulf Automatic Steering)

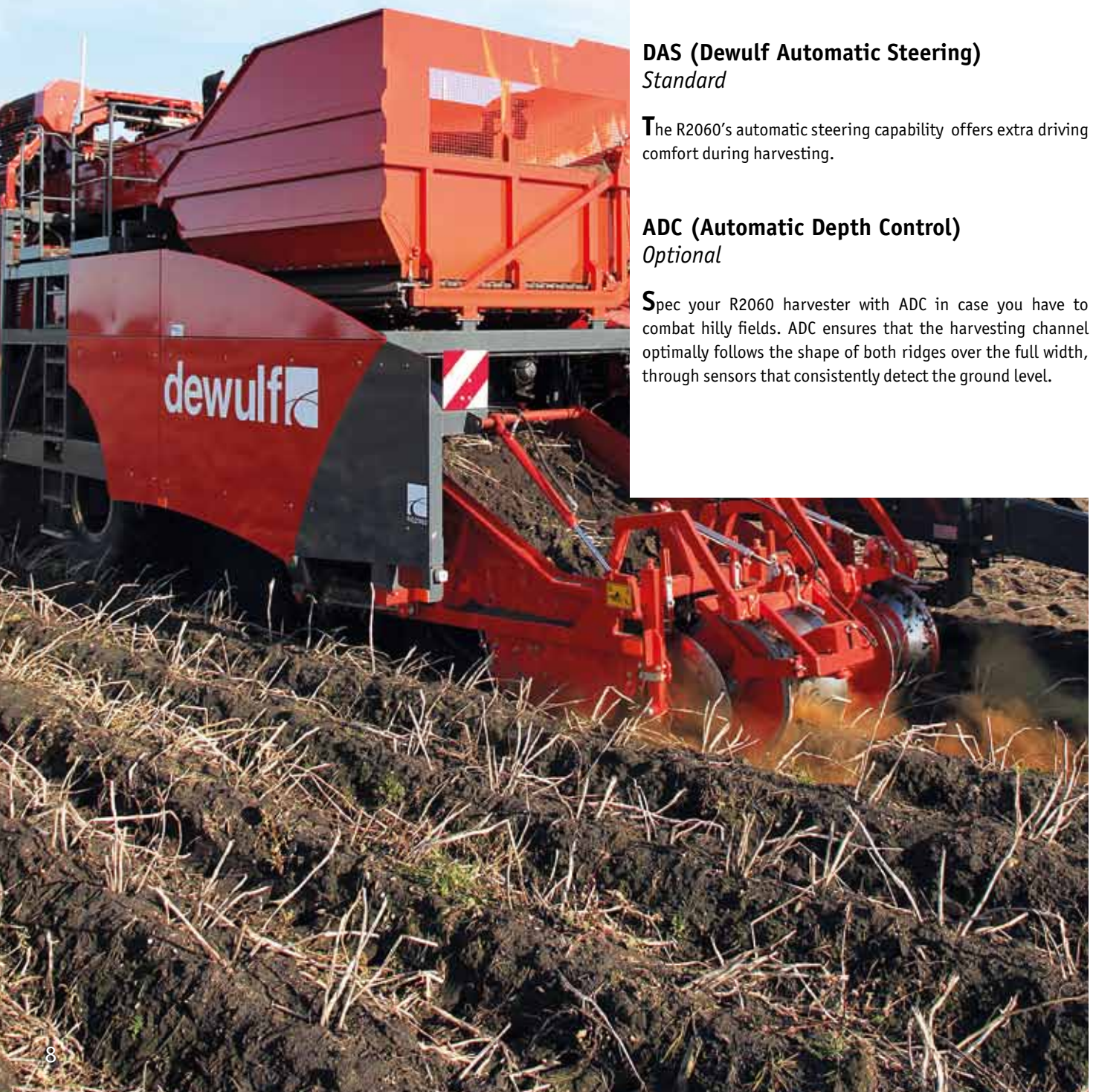
Standard

The R2060's automatic steering capability offers extra driving comfort during harvesting.

ADC (Automatic Depth Control)

Optional

Spec your R2060 harvester with ADC in case you have to combat hilly fields. ADC ensures that the harvesting channel optimally follows the shape of both ridges over the full width, through sensors that consistently detect the ground level.





Working easier and faster

Dewulf has committed itself to making the operation of the R2060 as easy as possible. Because easy operation equals working faster. The control unit with state-of-the-art operation and look & feel has neatly arranged functions and allows for an easy adjustment of settings. The optional color display and cameras also offer excellent images of the complete product flow.



The joystick is comfortable to work with



The Control Unit offers an excellent overview

Strong chassis, strong arguments

- ✓ Unequalled ground clearance
- ✓ Heavy duty rear axle with steering radius of 20°
- ✓ The industry's highest level of accessibility
- ✓ Optional traction
- ✓ Standard 850/50-30.5 wheels
- ✓ Standard 1000 rpm/min (optional 540 rpm/min)



1. Continental 380/85 R34 (1522 x 695 mm) - optional
2. Michelin 1000/50 R25 (1646 x 1092 mm) - optional
3. Trelleborg 850/50 R30.5 (1650 x 850 mm) - standard



Low operational cost, high-quality service



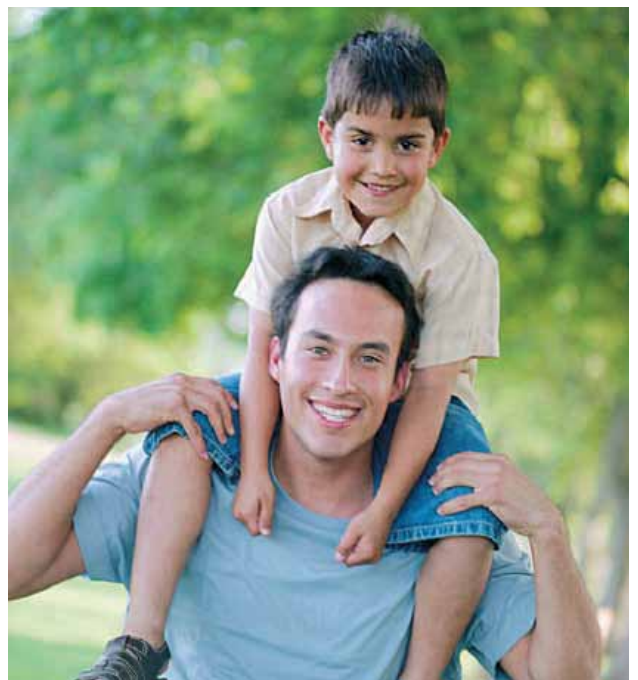
Every minute of downtime means that precious harvesting time is lost. Dewulf harvesters are therefore built to last, engineered with a dedication to quality and durability. Our harvesters are equipped with standard parts geared to deal with the toughest applications, available worldwide and easy to replace. Routine maintenance is reduced, gaining harvest time and releasing stress when the pressure is on.

When it comes to service, you need quick and uncompromised solutions to keep you going. This means relying on people which have your best interests in mind and are truly committed to help you every step of the way. Together with an authorized network of dealerships worldwide, we provide expert advice and efficient service to keep your business running smoothly.

At Dewulf, we know your name

As with many other successful businesses, the beginnings of Dewulf were modest. Robert Dewulf grew up at his father's farm with a fascination for machinery. In 1946 Robert Dewulf started single handed the construction of potato harvesters, to meet the needs of vegetable growers in the region. His devotion for engineering, combined with a team of dedicated employees, elevated the company to where we are today. A dynamic family owned business with its heritage in the development of state-of-the-art harvesters for potatoes and vegetables.

Dewulf takes pride in meeting your specific requirements and comes up with unsurpassed solutions to fulfill the highest expectations. During more than 65 years' presence, Dewulf harvesters have found their way to over 37 countries worldwide. Long term growth continues by embracing new market opportunities and by anticipating today's and tomorrow's challenges with great ambition. At Dewulf our strategic planning is focused on further expansion on a global scale. However, it's the individual customer who matters most. The trust and confidence received from our customers worldwide is Dewulf's core trademark, retained from commitment, dedication and honest family values. Our daily job is proving your trust worthy.





Technical specifications

Rs2060

RA2060

RQ2060

RQA2060

Harvest channel	Number of rows	2			
	Harvesting share	1-part			
	Channel width (mm)	1500 – 1700			
	Crop intake	2 diabolo rollers, 2 haulm intake rollers and 4 adjustable discs			
	APC (Automatic Pressure Control)	●			
	ADC (Automatic Depth Control)	○			
	DAS (Dewulf Automatic Steering)	●			
Webs	Number of webs	3			
	Length digging web (mm)	2065			
	Length 1st sieving web (mm)	3820			
	Length 2nd sieving web (mm)	2160	3030	2160	3030
Cleaning	Lower hedgehog belt	●			
	Upper hedgehog belt	●			
	Cleaning module	-	●	-	●
	Agitators	2 (+ 2 extra agitators optional)			
Haulm removal	Haulm roller	●	●	-	-
	Deviner web	-	-	●	●
Picking table	Width picking table (mm)	1000			
	Sorting platform	Platform for 6 persons			
	Grading rollers	○			
Hopper	Discharge height (mm) max./min.	4200 / 1500			
	Unloading on the move	●			
	Automatic hopper filling	●			
	Capacity	11 m ³			
Tires	Trelleborg 850/50 R30.5 (1684x920 mm)	●			
	Continental 380/85 R34 (1538x401 mm)	Double mounting: - only left: ○			
	Michelin 1000/50 R25 (1640x1050 mm)	Left and/or right: ○			
Dimensions	Weight (kg)	10.860	11.950	11.568	12.632
	Length (mm)	11.030	12.020	12.000	13.300
	Width (mm)	3.300 with Trelleborg, 3.500 with Continental or Michelin			
	Height (mm)	3995			
Tractor min. Hp		135	150	140	155
Prop Shaft		1000 rpm/min (optional 540 rpm/min)			
Acceleration		2 speeds for the digging web			
		● Standard ○ Optional - Not available			

Dewulf keeps the right to change the concept and the specifications or to make adaptations to the machine, without obligations for the bought material or after the changes mentioned.

n.v. Dewulf s.a. Belgium

Moorseelsesteenweg 20 - B-8800 Roeselare

Tel. +32 51 20 58 71 - Fax +32 51 21 11 82

E-mail: info@dewulf.be - www.dewulfgroup.com



Your Dewulf Dealer: